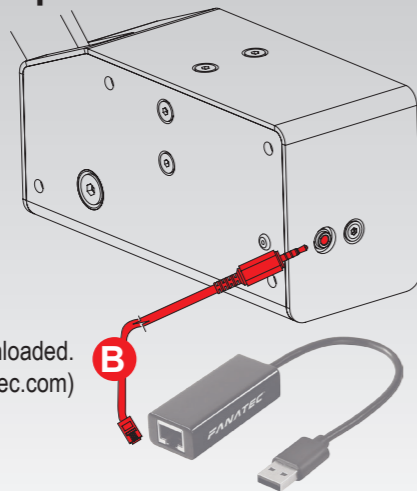


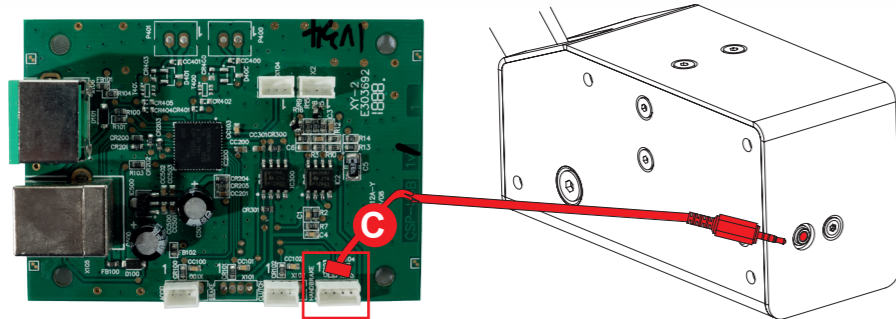
3 TO CONNECT

RJ 11 for ClubSport USB Adapter
(not included)

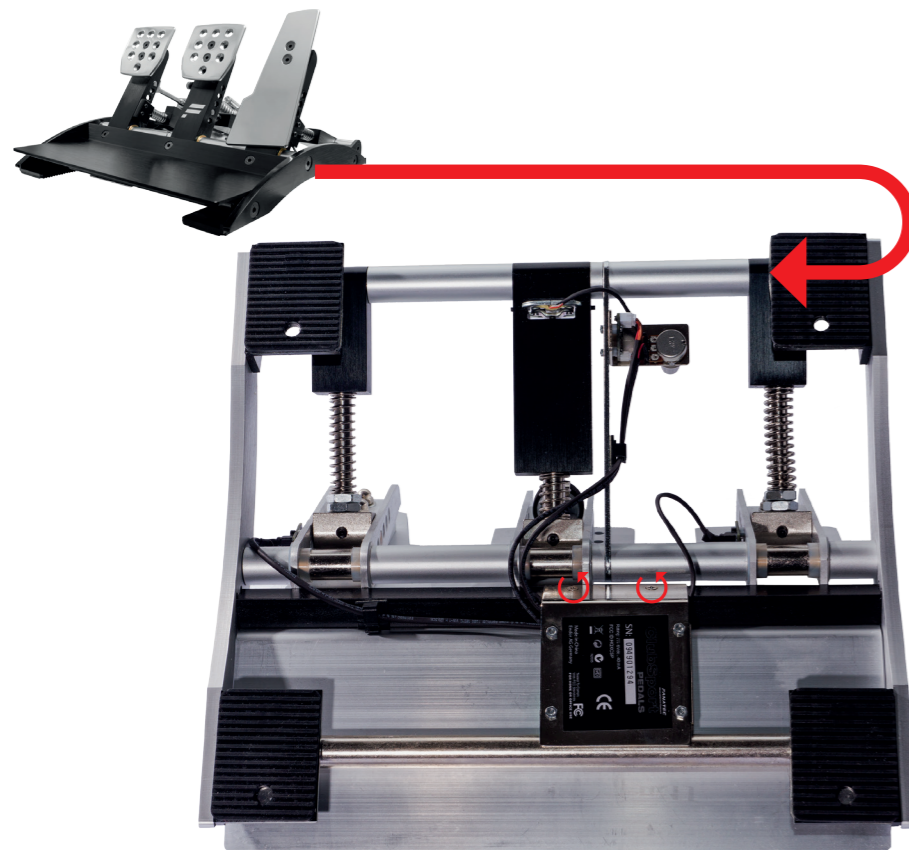
Make sure the correct firmware file has been downloaded.
You can obtain it at Fanatec's website (www.fanatec.com)
in the download section.



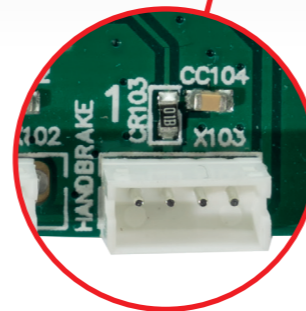
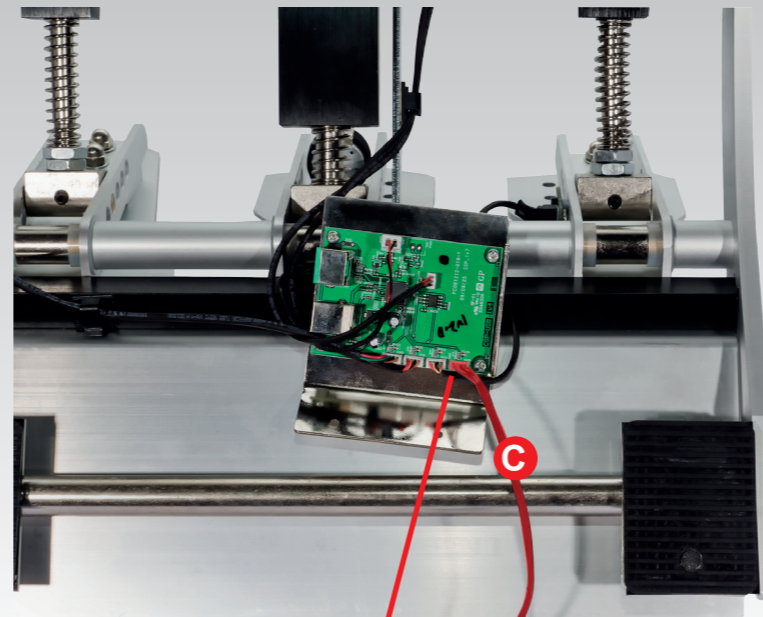
PCB Connector for ClubSport Pedals V2



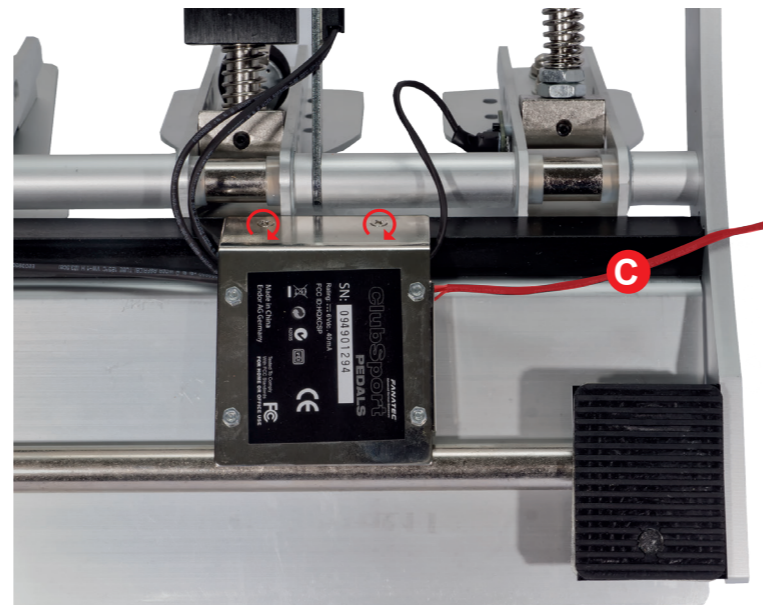
- Turn over ClubSport Pedals V2 to untighten screws



- Connect cable **C** to circuit board



- Set cap and tighten screws to close



We recommend fastening the cable **C** to the pedal frame using cable ties

ClubSport

HANDBRAKE



QuickGuide

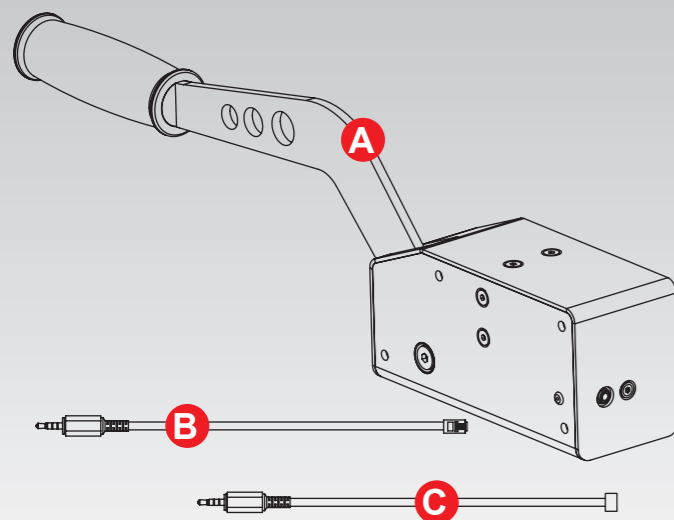


www.fanatec.com

ENDOR®

Fanatec® is a registered trademark of Endor AG
Designed and developed by Endor AG in Germany

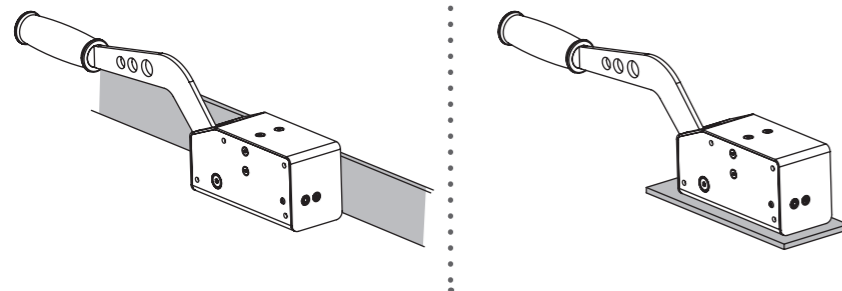
PACKAGE CONTENTS



1 MOUNTING OPTIONS

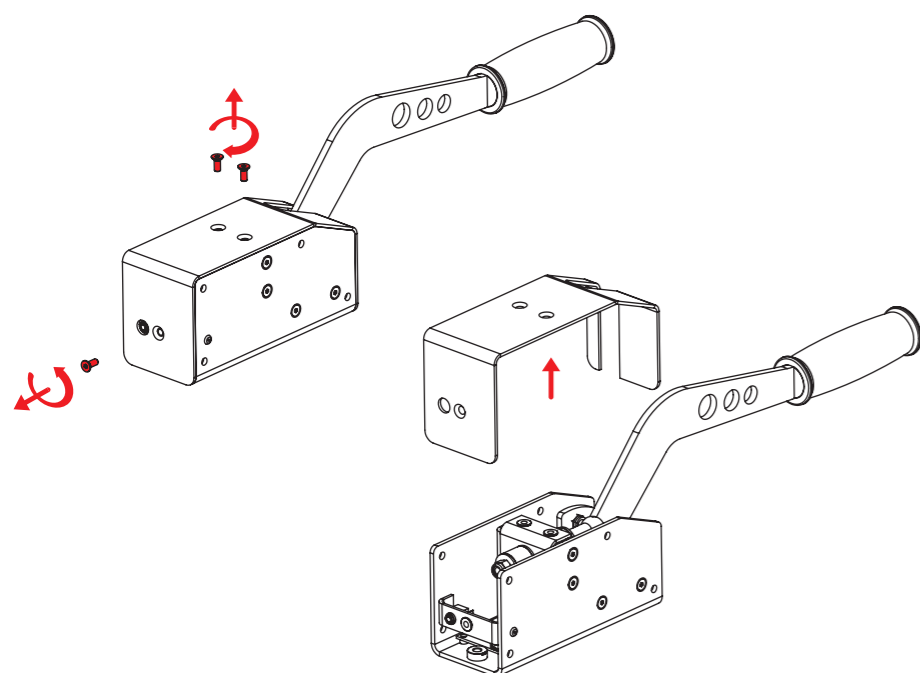
OPTION - I

OPTION - II

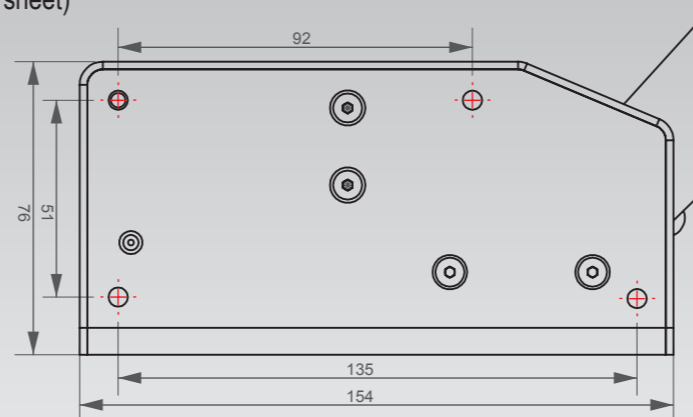


STEPS FOR OPTION - I

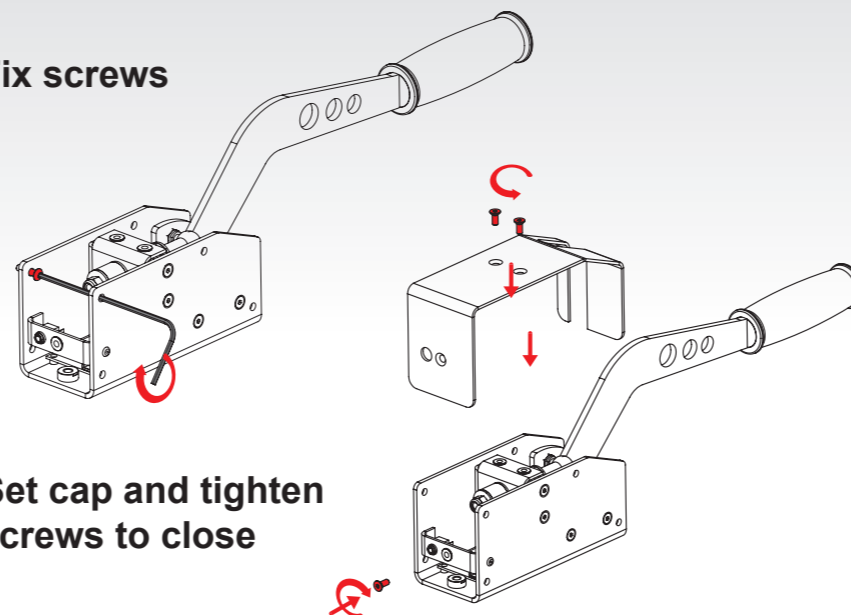
- Untighten screws to remove cap



- Use drilling template, to position holes
(extra sheet)



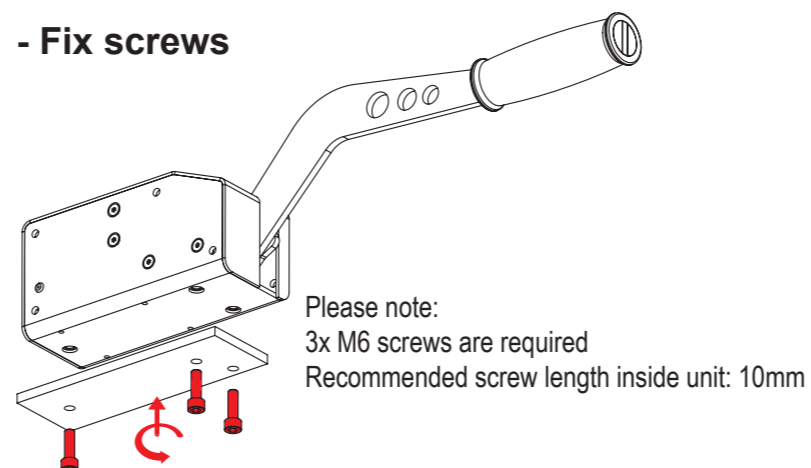
- Fix screws



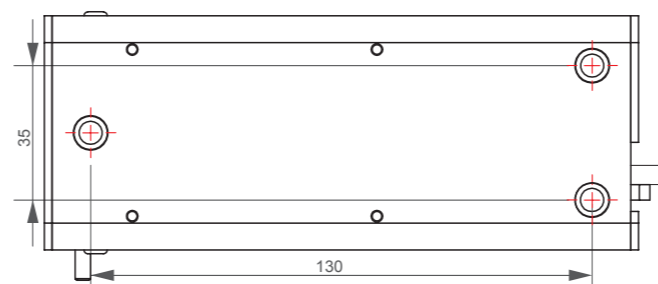
- Set cap and tighten screws to close

STEPS FOR OPTION - II

- Fix screws



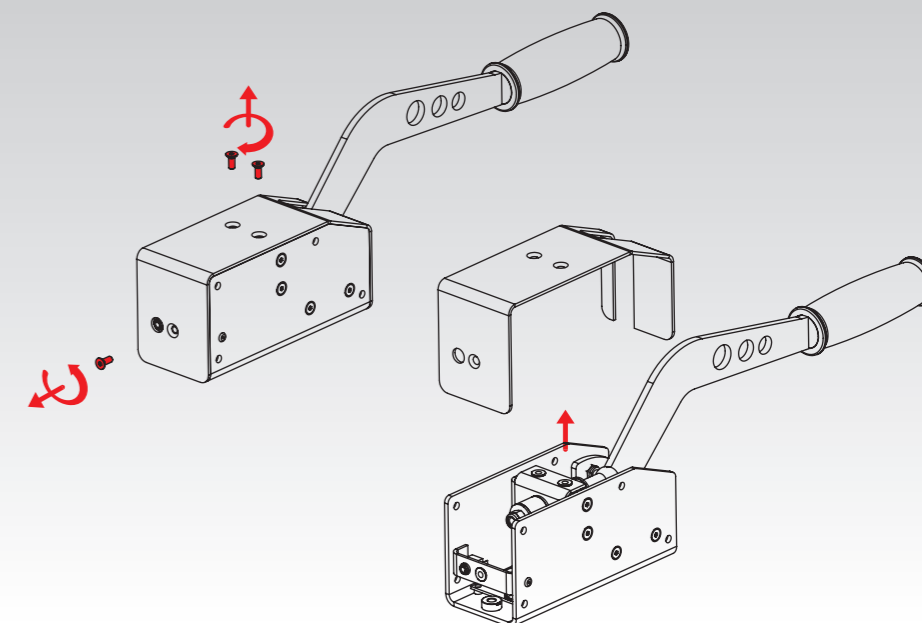
- Use drilling template, to position holes
(extra sheet)



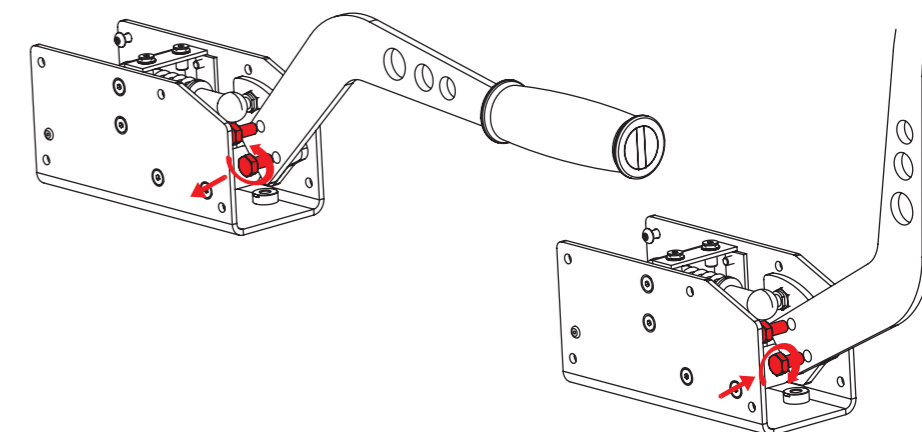
2

LEVER OPTIONS

- Untighten screws to remove cap



- Change lever to vertical position



- Set cap and tighten screws to close

