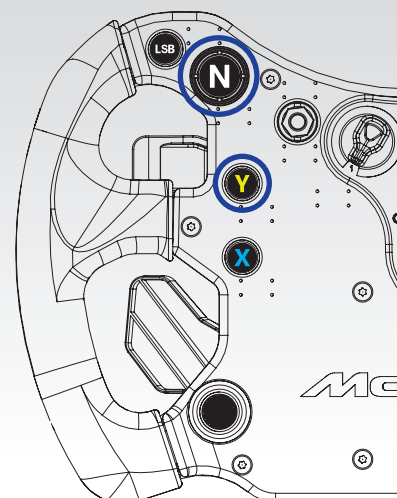


MODES

To switch between modes simultaneously press and hold the buttons **N** + **Y**, highlighted below, for one second.

The wheel base LED indicates the active mode:

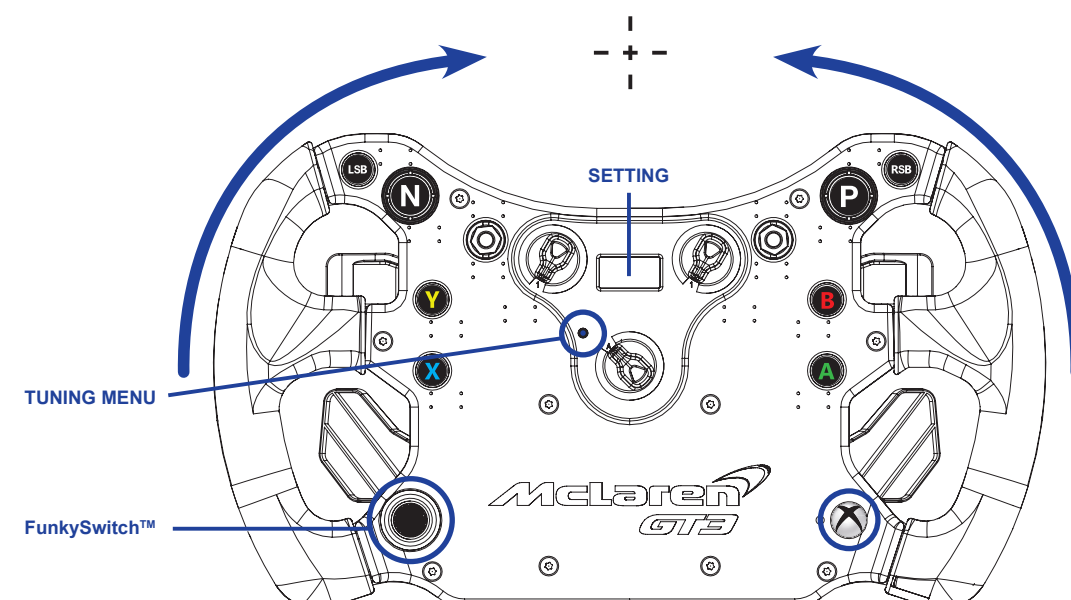
- Green means Xbox One mode
- Red means PC mode
- Blue means PS4™ mode*
- Purple means compatibility mode*



* not applicable for every Fanatec wheel base, please check the individual user manual of your Fanatec wheel base.

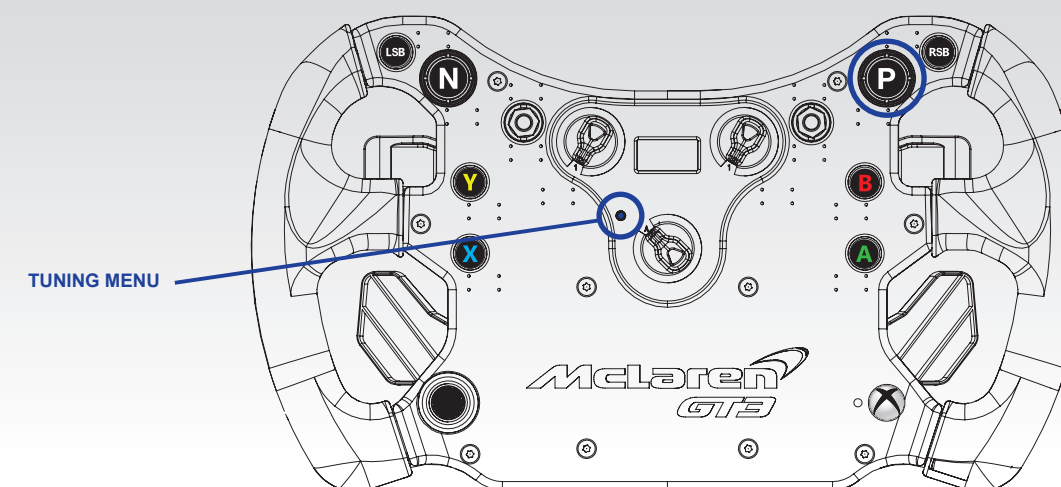
CENTER CALIBRATION

If a center calibration is needed (e. g. after firmware update of wheel base) you need to enter the tuning menu by pressing the [TUNING MENU] Button. "SETTING" will appear on the OLED display. Now turn the wheel to its center position and then press the [FunkySwitch™] + **X** buttons at the same time to calibrate the wheel center.



SHIFTER CALIBRATION

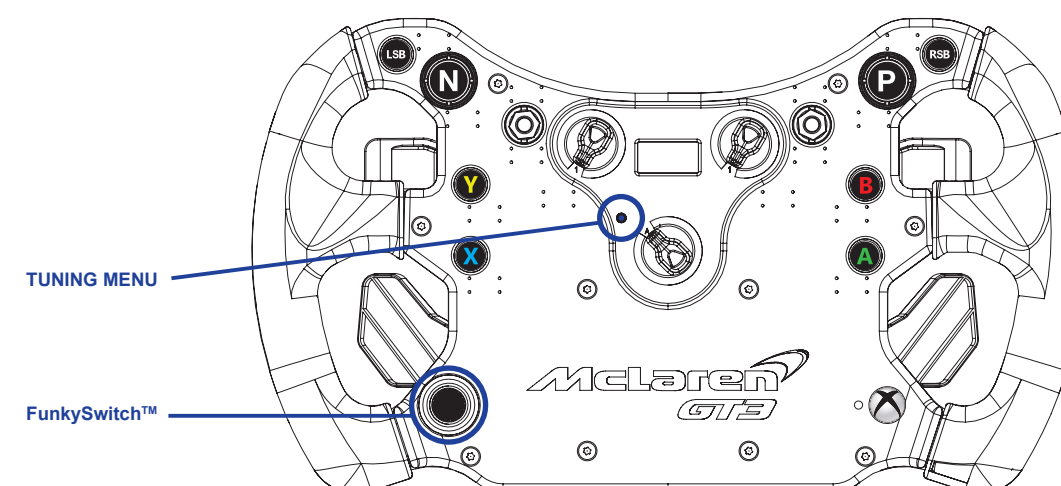
To enter shifter calibration mode, simultaneously press and hold the [TUNING MENU] + **P** buttons, as highlighted below. For the detailed process read the shifter manual.



TUNING MENU

To enter the tuning menu press the [TUNING MENU] button. To navigate inside the menu, use the D-PAD [FunkySwitch™]:

- Press the [FunkySwitch™] up or down to access 5 setups (SET 1, SET 2, ... 5)
- Press the [FunkySwitch™] right or left to go through the options
- Rotate the [FunkySwitch™] left or right to change option values. The new values are in effect immediately and will be stored inside the wheel base.



CSL Elite Steering Wheel
McLaren GT3



QuickGuide

EN

Manufactured by

ENDOR®

Fanatec® is a registered trademark of Endor AG
Designed and developed by Endor AG in Germany
Seligenthaler Straße 16 a - 84034 Landshut - Germany
Telephone: +49 (871) 9221-122 Fax: +49 (871) 9221-221
Email: info.webshop@fanatec.com
Internet: www.fanatec.com - www.endor.ag

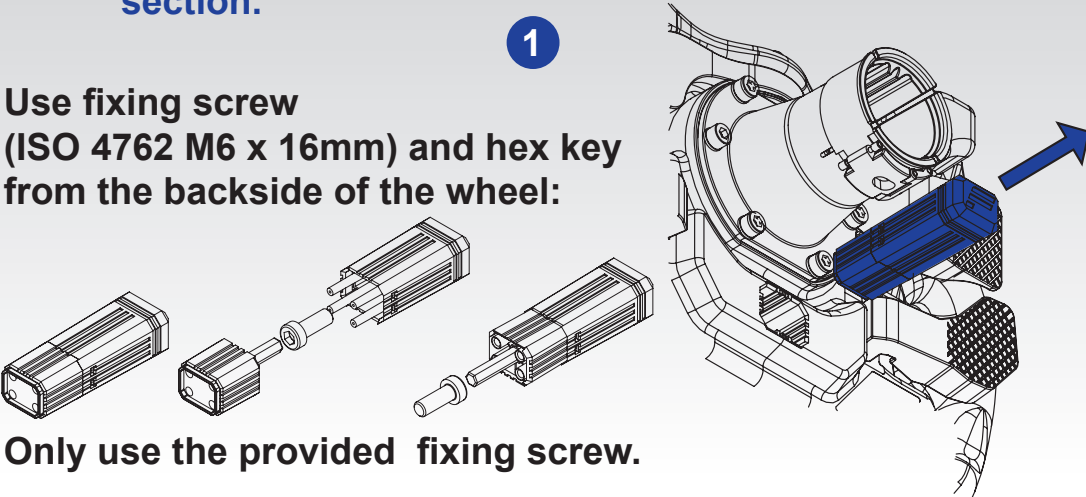


www.fanatec.com

ATTACHING THE RIM

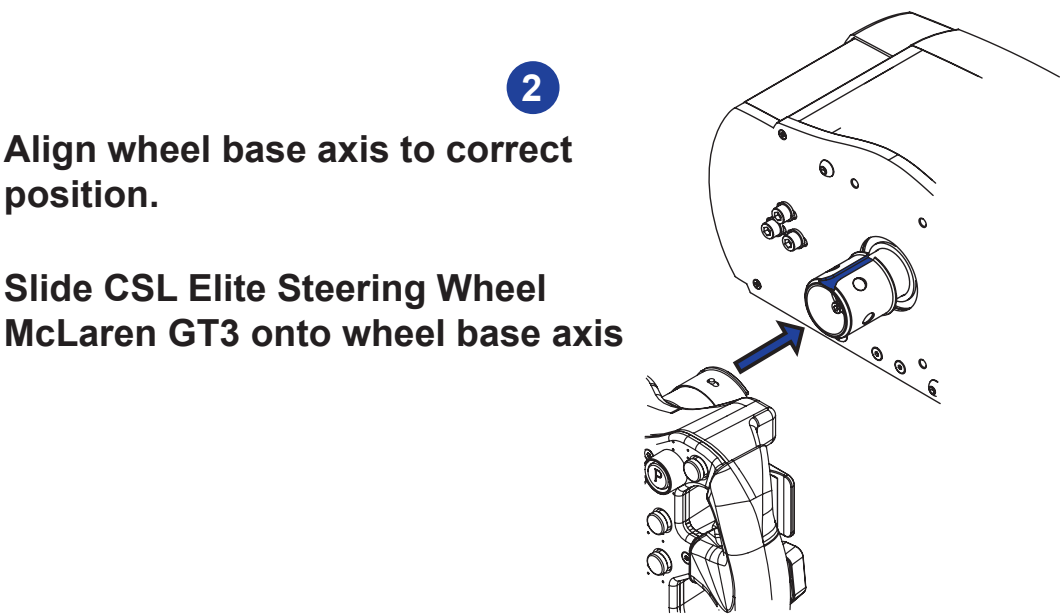


Please download and install the latest PC driver and wheel base firmware before mounting the CSL Elite Steering Wheel McLaren GT3. You can obtain it at Fanatec’s website (www.fanatec.com) in the download section.



Use fixing screw (ISO 4762 M6 x 16mm) and hex key from the backside of the wheel:

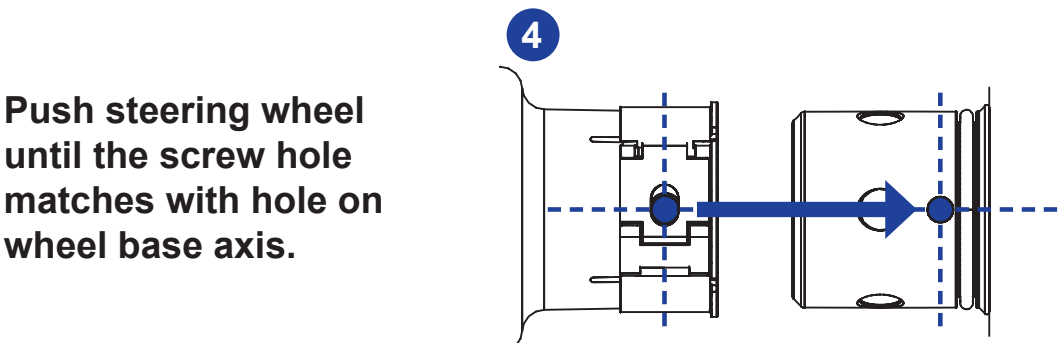
Only use the provided fixing screw.



Align wheel base axis to correct position.

Slide CSL Elite Steering Wheel McLaren GT3 onto wheel base axis

Turn the steering wheel top side down to see the bottom side of the clamp ring to follow next step below.



Push steering wheel until the screw hole matches with hole on wheel base axis.

IMPORTANT: Never use without screw!

5

Place and tighten the fixing screw to fix the clamp ring mechanism. Use only the hex key from the wheel compartment.

Proceed in reverse order to remove the wheel from the base.



As an option for quick attaching and removal of the wheel you may upgrade to the ClubSport QuickRelease Adapter (CS QRA), available as an accessory at www.fanatec.com.



ANALOG PADDLE MODES

The CSL Elite Steering Wheel McLaren GT3 has two analog paddles. With the blue multi-position switch you can change between modes:

A Clutch bite point**

Left & right paddle work in parallel. The paddle that is pressed further is valid.

B Handbrake + Clutch

Left: handbrake; right: clutch

C Brake + Throttle

Left: brake; right: throttle

D Mappable analog axes

paddles can be mapped as two additional axes

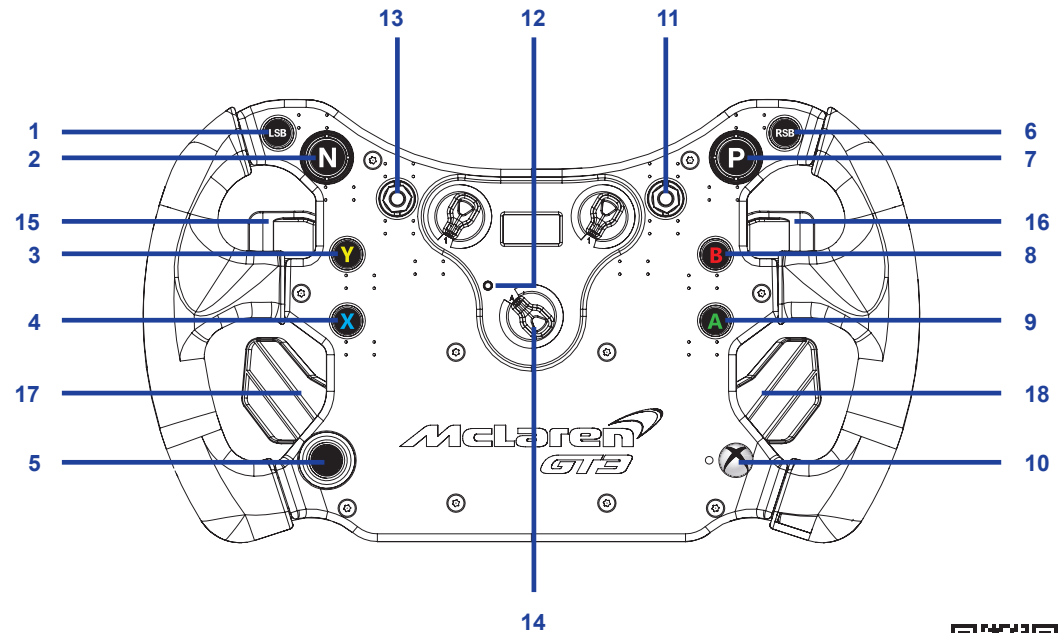
**** Clutch bite point feature** (for race start)

In mode A this feature is activated anytime when both paddles are pressed to at least 5%.

- Press both paddles all the way in. The display will show 100%.
- Release one paddle while keeping the other fully pressed. The display now shows the percentage value of the released paddle while the car’s clutch is still fully pressed.
- Set the released paddle to the percentage value where your car’s clutch starts to bite (evaluate in earlier tests).
- As soon as the virtual start lights turn to green, completely release the fully pressed paddle and the clutch is immediately at the bite point, held by the other paddle.

BUTTON MAPPING

No.	Button	Button no. PC	Xbox One
1	LSB (orange)	12	LSB
2	N (high bezel)	9	VIEW
3	Y (grey)	4	Y
4	X (red)	1	X
5	FunkySwitch™ up, down, left, right, press	Up, down, left, right, press (26)	up, down, left, right, press
6	RSB (orange)	11	RSB
7	P (high bezel)	10	Menu
8	B (grey)	3	B
9	A (red)	2	A
10		25	Guide
11	Toggle switch R –up/ down	7 / 31	LT (throttle) / RT (brake)
12	Tuning menu	-/-	-/-
13	Toggle switch L – up/ down	8 / 32	LT (throttle) / RT (brake)
14	Paddle mode switch (blue)	See analog paddles modes described in this Quick Guide	
15	Shifter paddle L (down)	6	LB
16	Shifter paddle R (up)	5	RB
17	Analog Paddle L	See analog paddles modes described in this Quick Guide	
18	Analog Paddle R		



NOTE: For a more detailed and hands on explanation, see our video tutorials on YouTube™.

